



Last update:
August 2008

Blackberry

Enabling S/MIME E-Mail Encryption to HSH Nordbank AG

Für Deutschsprachige Leser / For German speakers only:

Hinweis: Da die Software zum Validierungszeitpunkt in Englisch vorlag, finden Sie die komplette Anleitung in englischer Sprache vor. Wir bitten um Ihr Verständnis.
(without ensuring all information)

Introduction

In order to be able to receive and send encrypted emails on your BlackBerry® you have to prepare your BlackBerry® environment according to the following steps.

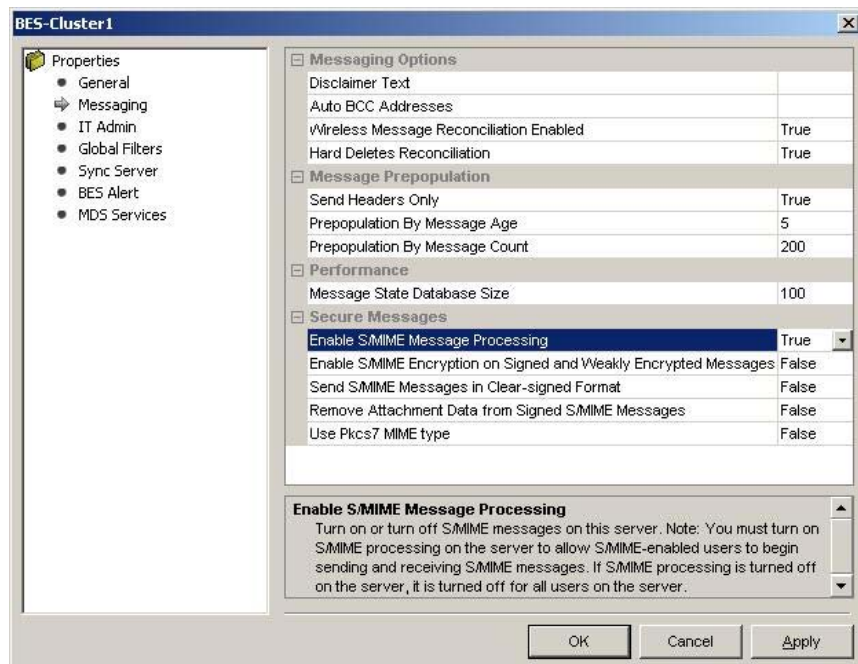
System Requirements

- Desktop Manager Software 4.x on local PC
- Handheld Software 4.1 – 4.5 on BlackBerry® Handheld
- S/MIME Support Package Software on BlackBerry® Handheld
- BlackBerry® Enterprise Server (BES) with activated S/MIME (without BES S/MIME encryption will not be available)
 - Version 2.1 SP3A or later for Microsoft Exchange Server
 - Version 4.1 SP2 or later for IBM Lotus Domino

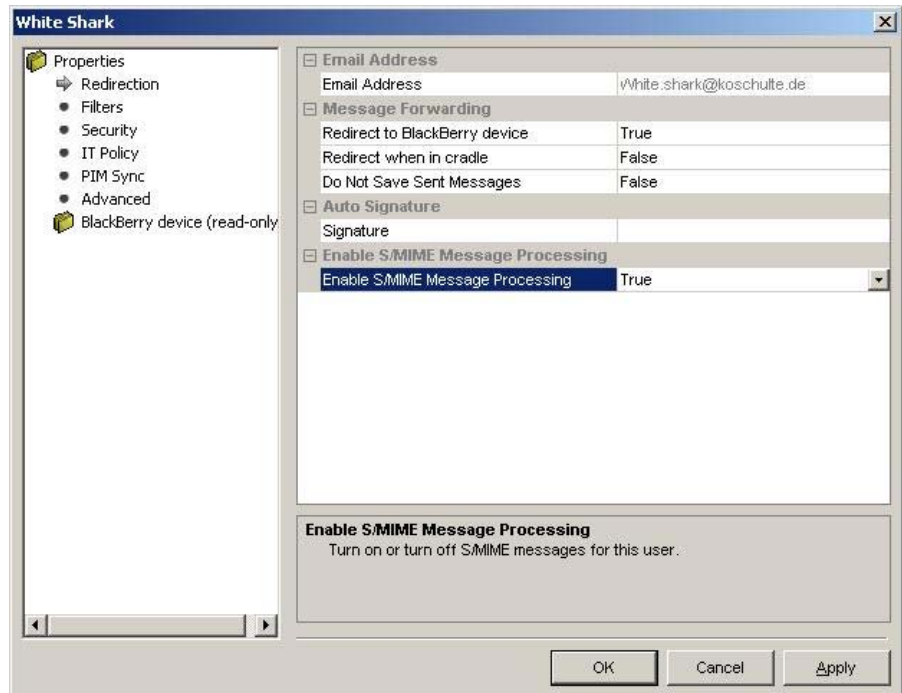
Basic installation steps

1. Activating S/MIME on BES

Server:



User (Exchange only):



2. Install S/MIME Support Package on Handheld

Step 1:

Insert the BlackBerry® Desktop Software installation CD into your CD drive. Complete the on-screen instructions.

- In the Setup Type window, select Custom.
- In the Custom Setup window, click Certificate Synchronization and this feature and all subfeatures will be installed on local hard drive.

Step 2:

Download and install the S/MIME Support Package on your computer where the Desktop Manager Software is installed, too.

The S/MIME Support Package can be downloaded for free on the following Website :

<https://www.blackberry.com/Downloads/entry.do?code=430C3626B879B4005D41B8A46172E0C0>

Step 3:

1. Verify that your BlackBerry® device is connected to your computer.
2. Start your Desktop Manager Software
3. Double-click the Application Loader icon. Click Next.
4. Select the BlackBerry® S/MIME Support Package check box. Click Next.
5. Click Finish.

3. Import certificates

To read encrypted emails from HSH Nordbank AG on your BlackBerry® device you have to import your own S/MIME certificate with private key included.

With the BlackBerry® Certificate Synchronization Manager (part of the BlackBerry® Desktop Manager) you can import certificates stored on your computer into your Blackberry.

To encrypt emails to HSH Nordbank AG on your BlackBerry® you have to import the HSH Nordbank root certificate first and after that all certificates from all the recipients you want to send to.

You can download the root certificate from:

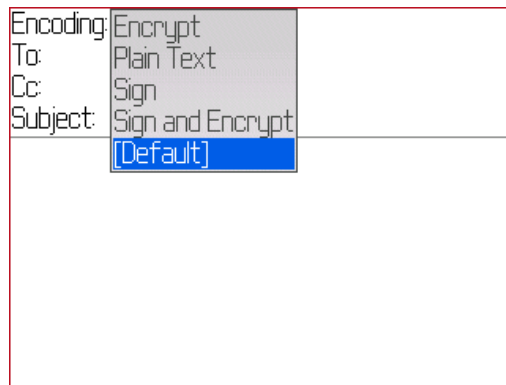
http://www.hsh-nordbank.de/media/secureemail/stammzertifikat_secure_email_hsh.zip

In the first certificates synchronization session you are asked for a password for the key-store. It is very important that you remember this password.

4. Sending an encrypted email

If all installation steps had been done carried out you can choose encryption and signing options while creating an email.

If you choose „Encrypt“ or „Sign and Encrypt“, you will be prompted to enter your password for the keystore. After then the email will be transmitted.



5. Receiving an encrypted email

If your private key was successfully installed, encrypted emails will be automatically decrypted if you open it.

6. More information / User Guide

For more information regarding the use of the S/MIME Support Package, see:

<http://na.blackberry.com/eng/ataglance/security/products/smime.jsp>

Contact

In case of any problems please don't hesitate to contact us.

HSH Nordbank AG
Service Center

+ 49 431 900-23423